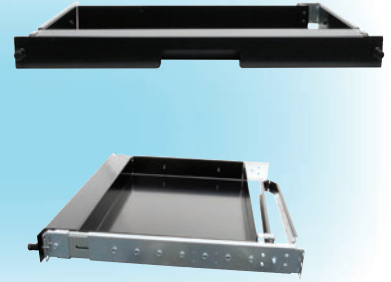


KEYBOARD STORAGE



RMKD-00/1



RackMount Keyboard Drawer (RMKD)

The RMKD keyboard storage drawer provides a convenient 1U high short depth (14") storage space for compact keyboards. The front panel features a built-in handle and dual retainers to secure the drawer into the rack when not in use. A two inch wide palm rest is provided for comfortable keyboard use. Attached ball-bearing slides lock in the extended position to give a stable platform when in use. A rear mounted carrier keeps keyboard/mouse cables from obstructing in and out movement of the drawer. A choice of rear slide extensions provide rack mounting adjustments of 14" to 31" rail to rail rack depth. Ordering configurations range from an empty drawer to drawer plus keyboard/mouse combinations.



RMKD-01/1



RMKD-02/1



Specifications:

Dimensions (WxHxD):

- **Keyboard Storage Area:**

16.5" x 1.7" x 10.0"

- **Overall :**

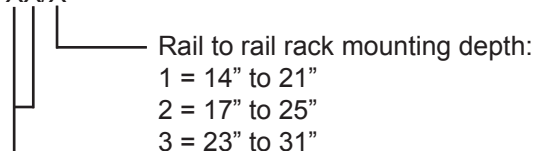
19.0" x 1.74" x 14.0"

Weight (Empty Drawer):

8.5 lbs

Model Numbers:

RMKD-XX/X



Installed Keyboard/Mouse Choice:

- 00 = No Keyboard or Mouse Installed
- 01 = OEM Sub-compact Keyboard + Optical Mouse
- 02 = OEM 104 Key KB + Touchpad
- 03 = OEM 83 Key KB + Touchpad
- 04 = OEM 83 Key KB + 16mm Trackball
- 05 = Cherry™ 83 Key KB + 16mm Trackball
- 06 = Cherry™ 104 Key KB + Touchpad
- 07 = Cherry™ Compact 104 Key KB + Touchpad



We offer OEM and custom solutions.
Contact us for additional information.

RECORTEC, INC.

www.recortec.com
sales@recortec.com

1-800-729-7654

3329 Kifer Road Santa Clara, CA 95051
Tel: 408-928-1480 Fax: 408-928-1489