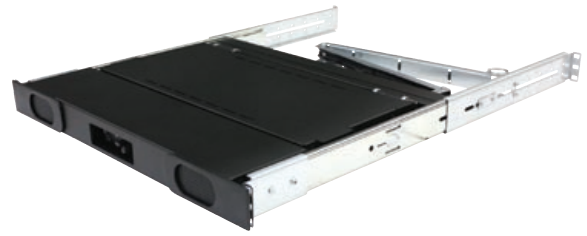


10.4" RACK MOUNT CONSOLE WITH SPEAKERS



COMPACT CONSOLE COMBINES 10.4" LCD, KEYBOARD, MOUSE AND SPEAKERS IN 1U OF RACK SPACE.

1024 x 768 10.4" LCD Display.
 Choice of PS/2 or USB trackball or touchpad pointing device.
 24 Watt front panel speakers accessible when unit closed.
 Complete with adjustable depth slides and cable management.

DISPLAY SPECIFICATIONS

Display Type:	Active matrix TFT LCD	Resolution:	640 x 350
Colors:	16.2M colors		640 x 480
Contrast Ratio:	1200:1 typ.		800 x 600
Brightness:	400 cd/m ² typ.	Display Area:	10.4" Diagonal
Viewing Angle:	176°(H)/176°(V)	Horizontal Frequency:	31.5 to 80 KHz
Response Time:	25ms (typ).	Vertical Frequency:	56 to 75 Hz.
		Surface Treatment:	Anti-glare/Hard coat.

GENERAL SPECIFICATIONS

Dimensions:	19.0" (W) x 1.75" (H) x 13.80" (D) Add 3.0" for cable management.	
Weight:	27 lbs	
Power (TFT Display):	90 - 260 VAC, 50/60 Hz. 60 Watts maximum	
On-Screen Controls:	Brightness, Contrast, Horizontal & Vertical Position, Auto Adjust, OSD H & V Position, Load and Save Values	
Plug & Play:	DDC1 and DDC2B	
Temperature:	Operating:	0°C to 50°C
	Storage:	-20°C to 60°C
Humidity:	Operating:	10 to 85% RH (max)
Input Signal (VGA):	R.G.B. analog video, TTL H & V sync.	
Input Connector:	Display:	15-pin mini D-Shell
Standard Rack Slide Length:	16.0" Adjustable 17.0" to 26.5" (other lengths available) .	

KEYBOARD AND MOUSE SPECIFICATIONS

Rollover:	Alpha N-key rollover.
Auto repeat:	Yes.
Self Diagnostics:	At power on and system reset.
Data Buffer:	All codes buffered before sending.
Operating voltage:	+5 VDC +/- 5%.
Operating current:	100 mA max.
Trackball Size:	16mm.
Touchpad Size:	2.1" X 1.25"
Buttons:	Left and Right, Scroll(touchpad).
Interface:	Keyboard: PS/2 or USB. Trackball: PS/2 or USB. Touchpad: PS/2 or USB.
Compatibility:	DOS, Windows 3.X, Windows 95/98, Windows NT, Windows 2000, XP, Vista, 7.

MODEL NUMBER

RMM-2(X)0(X)(X)

Cherry™ KB w/trackball = 1
 Std KB w/ trackball = 3
 Std KB w/touchpad = 5

Blank = Standard Front Panel
 R = Front Panel + Retainer Screws
 Blank = No Video
 V = Composite and S-Video Inputs



RECORTEC, INC.

www.recortec.com
 sales@recortec.com

1-800-729-7654

1650-A Berryessa Rd Tel: 408-928-1480
 San Jose, CA 95133 Fax: 408-928-1489