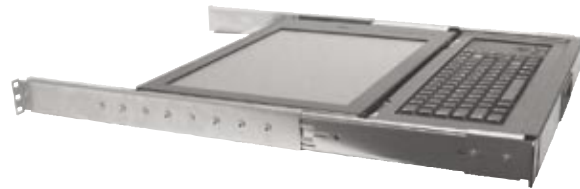


1U 17" LCD MONITOR WITH COMPACT KEYBOARD AND MOUSE



- Monitor and compact keyboard with trackball or touchpad in 1U of rack space for 19" racks.
- Mounted with included smooth action ball bearing slides which lock in the extended position.
- Monitor powers off preserving back light life when tilted down for sliding into the rack.
- Retainer and lock options to keep unit contained in the rack when not in use.
- Housed in rugged steel construction with a durable powder coat finish.
- Monitor surface protected by a clear unbreakable Lexan™ covering.

DISPLAY SPECIFICATIONS

Display Type:	Active matrix TFT LCD	Resolution:	640 x 350
Colors:	16.7 million colors		640 x 480
Contrast Ratio:	RMM-3X7: 1000:1 typ.		800 x 600
Brightness:	RMM-3X7: 280 cd/m ² typ.	Display Area:	1024 x 768
Viewing Angle:			1280 x 1024 (17")
		Horizontal Frequency:	17" Diagonal
			31.5 to 80 KHz
Response Time:	25ms.	Vertical Frequency:	56 to 75 Hz.

GENERAL SPECIFICATIONS

Dimensions:	19.0" (W) x 1.75" (H) x 20.80" (D)
Weight:	25 lbs
Power (TFT Display):	90 - 260 VAC, 50/60 Hz. 60 Watts maximum
On-Screen Controls:	Brightness, Contrast, Horizontal & Vertical Position, Auto Adjust, OSD H & V Position, Load and Save Values
Plug & Play:	DDC1 and DDC2B
Temperature:	Operating: 0°C to 50°C Storage: -20°C to 60°C
Humidity:	Operating: 10 to 85% RH (max)
Input Signal (VGA):	R.G.B. analog video, TTL H & V sync.
Input Connector:	Display: 15-pin mini D-Shell
Colors Available:	Black.

KEYBOARD AND MOUSE SPECIFICATIONS

Rollover:	Alpha N-key rollover.
Auto repeat:	Yes.
Self Diagnostics:	At power on and system reset.
Data Buffer:	All codes buffered before sending.
Operating voltage:	+5 VDC +/- 5%.
Operating current:	100 mA max.
Trackball Size:	16mm.
Touchpad Size:	2.1" X 1.25"
Buttons:	Left and Right, Scroll(touchpad).
Interface:	Keyboard: PS/2. Trackball: PS/2. Touchpad: PS/2.
Compatibility:	DOS, Windows 3.X, Windows 95/98, Windows NT, Windows 2000,XP. Specifications subject to change without notice.

MODEL NUMBER

RMM-3(X)7(X)

Cherry™ KB w/trackball = 1
Std KB w/ trackball = 3
Std KB w/touchpad = 5

Blank = Standard Front Panel
R = Front Panel + Retainer Screws
L = Front Panel + Lock
C = Front panel + Lock + Retainer

Contact us about other options and our additional rack mount products.



This unit is recommended for use with KVM switches.

Tel: 408-928-1480
web:www.recortec.com
1650 Berryessa Road

RECORTEC, INC.
1-800-729-7654

Fax: 408-928-1489
email:sales@recortec.com
San Jose, CA 95133