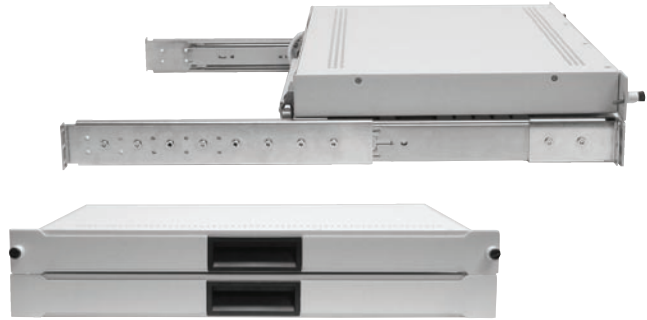


# 2U 17" AND 19" LCD KVM CONSOLES



- Monitor and Cherry™ keyboard with two button touchpad occupies 2U of 19" rack space.
- Included adjustable mounting depth ball bearing slides lock in the fully extended position.
- Monitor powers off preserving back light life when tilted down for sliding into the rack.
- Retainer and lock options to keep unit contained in the rack when not in use.
- Housed in rugged steel construction with a durable powder coat finish.
- Reduced rack depth for mounting in confined spaces.

## DISPLAY SPECIFICATIONS

**Display Type:**  
Active matrix TFT LCD

**Colors:**  
16.7 million colors

**Contrast Ratio:**  
17": 1000:1 typ.  
19": 800:1 typ.

**Brightness:**  
17": 250 cd/m<sup>2</sup> typ.  
19": 270 cd/m<sup>2</sup> typ.

**Viewing Angle:** 17" 19"  
Horizontal: 170° 178°  
Vertical: 160° 178°

**Response Time (TYP):**  
5ms 18ms

**Resolution:**  
640 x 350  
640 x 480  
800 x 600  
1024 x 768  
1280 x 1024

**Display Area:**  
17" - 17" Diagonal  
19" - 19" Diagonal

**Horizontal Frequency:**  
31 to 80 KHz

**Vertical Frequency:**  
55 to 76 Hz.

## GENERAL SPECIFICATIONS

**Chassis Dimensions:**  
17": 19.0" (W) x 3.50" (H) x 13.25" (D)  
19": 19.0" (W) x 3.50" (H) x 14.90" (D)

**Weight:**  
20 lbs

**Power (TFT Display):**  
90 - 260 VAC, 50/60 Hz.  
60 Watts maximum

**On-Screen Controls:**  
Brightness, Contrast, Horizontal & Vertical Position, Auto Adjust, OSD H & V Position, Load and Save Values

**Plug & Play:**  
DDC1 and DDC2B

**Temperature:**  
Operating: 0°C to 50°C  
Storage: -20°C to 60°C

**Humidity:**  
Operating: 10 to 85% RH (max)

**Input Signal (VGA):**  
R.G.B. analog video, TTL H & V sync.

**Input Connector:**  
Display: 15-pin mini D-Shell

**Colors Available:**  
Black(B) and Light Gray.

## KEYBOARD AND TOUCHPAD SPECIFICATIONS

**Rollover:** Alpha N-key rollover.

**Auto repeat:** Yes.

**Self Diagnostics:** At power on and system reset.

**Data Buffer:** All codes buffered before sending.

**Operating voltage:** +5 VDC +/- 5%.

**Operating current:** 200 mA.

**Touchpad Size:** 2.2" X 1.6"

**Buttons:** Left and Right.

**Interface:** Keyboard: PS/2.  
Touchpad: PS/2.

**Compatibility:** Windows operating systems.  
Specifications subject to change without notice.

## MODEL NUMBER

RMM-82(X)(X)

- Blank = Standard Front Panel
- R = Front Panel + Retainer Screws
- L = Front Panel + Lock
- C = Front Panel + Lock + Retainer Screw
- 7 = 17" TFT Display
- 9 = 19" TFT Display

We offer OEM and custom solutions.  
Contact us for additional information.



**RECORTEC, INC.**

www.recortec.com  
sales@recortec.com

**1-800-729-7654**

3329 Kifer Road Santa Clara, CA 95051  
Tel: 408-928-1480 Fax: 408-928-1489