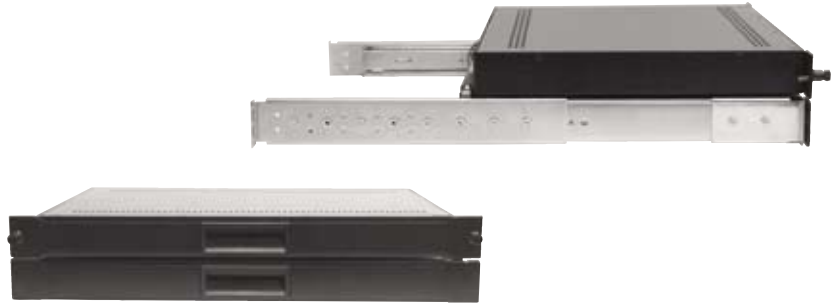


2U 17" OR 19" LCD MONITOR, KEYBOARD AND MOUSE STORAGE



Shown with optional mouse.



- Monitor, keyboard and storage/use area for mouse occupies 2U of vertical 19" rack space.
- Included adjustable mounting depth ball bearing slides lock in the fully extended position.
- Monitor powers off preserving back light life when tilted down for sliding into the rack.
- Retainer and lock options to keep unit contained in the rack when not in use.
- Housed in rugged steel construction with a durable powder coat finish.
- Reduced rack depth for mounting in confined spaces.

DISPLAY SPECIFICATIONS

Display Type:	Active matrix TFT LCD	Resolution:	640 x 350 640 x 480 800 x 600 1024 x 768 1280 x 1024
Colors:	16.7 million colors	Display Area:	17" - 17" Diagonal 19" - 19" Diagonal
Contrast Ratio:	17": 1000:1 typ. 19": 800:1 typ.	Horizontal Frequency:	31 to 80 KHz
Brightness:	17": 280 cd/m ² typ. 19": 270 cd/m ² typ.	Vertical Frequency:	55 to 76 Hz.
Viewing Angle:	Horizontal: 178° Vertical: 178°		
Response Time:	18ms typ.		

KEYBOARD SPECIFICATIONS

Rollover:	Alpha N-key rollover.
Auto repeat:	Yes.
Self Diagnostics:	At power on and system reset.
Data Buffer:	All codes buffered before sending.
Operating voltage:	+5 VDC +/- 5%.
Operating current:	100 mA (max).
Interface:	Keyboard: PS/2 or USB (U).
Compatibility:	DOS, Windows 3.X, Windows 95/98, Windows NT, Windows 2000,XP.
Optional Mouse (M):	Optional optical mouse, PS/2 or USB (U).
Optional Cherry™ Keyboard:	Add suffix "C" to part number (C).

Specifications subject to change without notice.

Contact us about other options and additional rack mount products.

GENERAL SPECIFICATIONS

Chassis Dimensions:	17": 19.0" (W) x 3.50" (H) x 13.25" (D) 19": 19.0" (W) x 3.50" (H) x 14.90" (D)
Weight:	20 lbs
Power (TFT Display):	90 - 260 VAC, 50/60 Hz. 60 Watts maximum
On-Screen Controls:	Brightness, Contrast, Horizontal & Vertical Position, Auto Adjust, OSD H & V Position, Load and Save Values
Plug & Play:	DDC1 and DDC2B
Temperature:	Operating: 0°C to 50°C Storage: -20°C to 60°C
Humidity:	Operating: 10 to 85% RH (max)
Input Signal (VGA):	R.G.B. analog video, TTL H & V sync.
Input Connector:	Display: 15-pin mini D-Shell
Colors Available:	Black

MODEL NUMBER

RMM-86(X)(X)

_____	Blank = Standard Front Panel
_____	R = Front Panel + Retainer Screws
_____	L = Front Panel + Lock
_____	C = Front Panel + Lock + Retainer Screw
_____	7 = 17" TFT Display
_____	9 = 19" TFT Display



www.recortec.com
Tel: 408-928-1480
Fax: 408-928-1489

RECORTEC, INC.
1-800-729-7654

sales@recortec.com
1650 Berryessa Road
San Jose, CA 95133